

HXDWH

PRODUCT
CATALOGUE

产品目录

STA系列伺服电机



华大电机

ISO9001:2008

CE

M51205202

STA伺服电机

STA SERVO MOTORS

机座号 (mm) : 110、130、180

FRAME SIZE

额定转矩 (Nm) : 4.2~55.0

RATED TORQUE

额定功率(Kw) : 0.85~8.6

RATED POWER

额定转速 (rpm) : 1500、2000、3000

RATED SPEED

最高转速 (rpm) : 3000、4000

MAXIMUM SPEED

极对数: 5

POLES

转子惯量: 中惯量

ROTOR INERTIA

反馈元件: 可选

FEEDBACK

失电制动器: 可配

POWER-OFF BRAKE

适配驱动器工作电压 (VAC) : 220、380

MATCHED DRIVER WORKING VOLTAGE CODE

动力插座 (4P插座) : 110、130、180机座号

POWER SOCKET (4PIN)

绕组引线	U	V	W	⊕
插头编号	2	3	4	1

反馈元件插座: 省线增量式编码器 (代码F1, 9P插座/插头)

ENCODER SOCKET

信号	+5V	0V	A+	A-	B+	B-	Z+	Z-	⊕
插头编号	2	3	4	7	5	8	6	9	1

反馈元件插座: 非省线式增量编码器 (代码F、F5, 15 P, DB插座/插头)

ENCODER SOCKET

信号	+5V	0V	A+	A-	B+	B-	Z+	Z-	U+	U-	V+	V-	W+	W-	⊕
插头编号	2	3	4	7	5	8	6	9	10	13	11	14	12	15	1

反馈元件插座: TAMAGAWA绝对式多圈编码器 (代码M、M1, 7P插座/插头)

ENCODER SOCKET

信号	+5V	0V	SD+	SD-	E+	E-	⊕
插头编号	7	5	6	4	3	2	1

失电制动器插座 (2 P、3P) : 110、130、180机座号

ELECTRIC LOSS BRAKE SOCKET

机座号	110	130	180
工作电压	24VDC	24VDC	100VDC
制动转矩	≥8Nm	≥12Nm	≥30Nm
工作电流	≤0.6A		
插座编号	1	2	
备注	电源接入无极性要求 180机座号亦可配DC24V失电制动器		

编码器代码:

F: 增量复合式光电编码器 (2500C/T) **F1: 省线增量复合光电编码器 (2500C/T)**
INCREMENTAL ENCODER (2500C/T)

F5: 增量复合式光电编码器 (5000C/T)
INCREMENTAL ENCODER (5000C/T)

M: TAMAGAWA 绝对值串口协议光电编码器 (17bit/33bit)
TAMAGAWA ABSOLUTE ENCODER (17bit/33bit)

M1: TAMAGAWA 绝对值串口协议光电编码器 (23bit/39bit)
TAMAGAWA ABSOLUTE ENCODER (23bit/39bit)

C: 磁编码器
MAGNETIC ENCODER

特点 FEATURES

机座 (mm) : 110、130、180
FRAME SIZE

额定转速(rpm): 1500、2000、3000
RATED SPEED

失电制动器: 选配
ELECTRIC LOSS BRAKE

绝缘等级: F
INSULATION GRADE

安装方式: 法兰盘
INSTALLATION METHOD

环境温度: 0~55°C
ENVIRONMENT TEMPERATURE

额定转矩 (Nm) : 4.2~55.0
RATED TORQUE

最高转速 (rpm) : 3000、4000
MAXIMUM SPEED

额定功率(Kw): 0.85~8.6
RATED POWER

极对数: 5
POLES

防护等级: : 密封自冷式IP67
PROTECTION CLASS

适配驱动器工作电压 (VAC) : 220、380
MATCHED DRIVER

环境湿度: < 90% (无结露)
ENVIRONMENT HUMIDITY

STA系列伺服电机命名规则 STA PRODUCTS CODE SPECIFICATION

130	STA	-	M	054	15	30	L	M1	D	D	Z	/C
(1)	(2)		(3)	(4)	(5)	(6)	(7)	(8)	(9)	(10)	(11)	(12)

(1) 机座号
FRAME SIZE

(4) 额定转矩: 三位数 × 0.1Nm
RATED TORQUE: THE THREE-DIGIT NUMBER×0.1NM

(7) 驱动器工作电压 (VAC) : 220、380
DRIVER WORKING VOLTAGE CODE

(10) 具有最高转速特性
MAXIMUM SPEED FEATURES

(2) 交流永磁同步伺服电机
AC PERMANENT MAGNET

(5) 额定转速: 二位数×100rpm
RATED SPEED: THE DOUBLE-DIGITAL NUMBER×100RPM

(8) 编码器代码
ENCODER CODE

(11) 安装了失电制动器
WITH THE POWER-OFF BRAKE

(3) 反馈元件类型
FEEDBACK COMPONENTS TYPE

(6) 最高转速: 二位数×100rpm
MAXIMUM SPEED: THE DOUBLE-DIGITAL NUMBER×100RPM

(9) 产品系列
PRODUCT SERIES

(12) 轴伸端键槽代码, 无键无代码
THE SHAFT END KEYWAY CODE, NO CODE MEANS NO KEY

STA系列一览表
STA SERIES LIST

电机型号 MOTOR TYPE	主要参数 TECHNICAL PARAMETERS				
	额定转矩 RATED TORQUE	额定转速 RATED SPEED	最高转速 MAXIMUM SPEED	额定电流 RATED CURRENT	额定功率 RATED POWER
110STA-M0422030L□DD	4.2 Nm	2000 rpm	3000 rpm	4.7 A	0.88 Kw
110STA-M0423040L□DD	4.2 Nm	3000 rpm	4000 rpm	7.1 A	1.3 Kw
110STA-M0422030H□DD	4.2 Nm	2000 rpm	3000 rpm	2.8 A	0.88 Kw
110STA-M0423040H□DD	4.2 Nm	3000 rpm	4000 rpm	4.1 A	1.3 Kw
110STA-M0542030L□DD	5.4 Nm	2000 rpm	3000 rpm	6.0 A	1.1 Kw
110STA-M0543040L□DD	5.4 Nm	3000 rpm	4000 rpm	9.0 A	1.7 Kw
110STA-M0542030H□DD	5.4 Nm	2000 rpm	3000 rpm	3.5 A	1.1 Kw
110STA-M0543040H□DD	5.4 Nm	3000 rpm	4000 rpm	5.0 A	1.7 Kw
110STA-M0642030L□DD	6.4 Nm	2000 rpm	3000 rpm	7.0 A	1.3 Kw
110STA-M0643040L□DD	6.4 Nm	3000 rpm	4000 rpm	10.5 A	2.0 Kw
110STA-M0642030H□DD	6.4 Nm	2000 rpm	3000 rpm	4.5 A	1.3 Kw
110STA-M0643040H□DD	6.4 Nm	3000 rpm	4000 rpm	6.0 A	2.0 Kw
110STA-M0752030L□DD	7.5 Nm	2000 rpm	3000 rpm	9.0 A	1.6 Kw
110STA-M0753040L□DD	7.5 Nm	3000 rpm	3000 rpm	11.0 A	2.3 Kw
110STA-M0752030H□DD	7.5 Nm	2000 rpm	3000 rpm	5.0 A	1.6 Kw
110STA-M0753040H□DD	7.5 Nm	3000 rpm	4000 rpm	6.5 A	2.3 Kw
180STA-M1861530H□DD	18.6Nm	1500 rpm	3000 rpm	11.0 A	2.9Kw
180STA-M1862040H□DD	18.6Nm	2000 rpm	4000 rpm	14.2A	3.7Kw
180STA-M2301530H□DD	23.0 Nm	1500 rpm	3000 rpm	13.3 A	3.6 Kw
180STA-M2302040H□DD	23.0 Nm	2000 rpm	4000 rpm	18.5A	4.8 Kw
180STA-M2801530H□DD	28.0 Nm	1500 rpm	3000 rpm	16.5 A	4.4 Kw
180STA-M2802040H□DD	28.0 Nm	2000 rpm	4000 rpm	22.0 A	5.9 Kw
180STA-M3501530H□DD	35.0 Nm	1500 rpm	3000 rpm	20.5 A	5.5 Kw
180STA-M3502040H□DD	35.0 Nm	2000 rpm	4000 rpm	27.0 A	7.3 Kw
180STA-M4801530H□DD	48.0 Nm	1500 rpm	3000 rpm	27.0 A	7.5 Kw
180STA-M5501530H□DD	55.0 Nm	1500 rpm	3000 rpm	31.0 A	8.6 Kw

□编码器代码
Encodercode

STA系列一览表
STA SERIES LIST

电机型号 MOTOR TYPE	主要参数 TECHNICAL PARAMETERS				
	额定转矩 RATED TORQUE	额定转速 RATED SPEED	最高转速 MAXIMUM SPEED	额定电流 RATED CURRENT	额定功率 RATED POWER
130STA-M0541530L□DD	5.4 Nm	1500 rpm	3000 rpm	6.5 A	0.85 Kw
130STA-M0541530H□DD	5.4 Nm	1500 rpm	3000 rpm	3.6 A	0.85 Kw
130STA-M0542040H□DD	5.4 Nm	2000 rpm	4000 rpm	5.0 A	1.1 Kw
130STA-M0641530L□DD	6.4 Nm	1500 rpm	3000 rpm	8.0 A	1 Kw
130STA-M0641530H□DD	6.4 Nm	1500 rpm	3000 rpm	4.2 A	1 Kw
130STA-M0642040H□DD	6.4 Nm	2000 rpm	4000 rpm	5.5 A	1.3 Kw
130STA-M0751530L□DD	7.5 Nm	1500 rpm	3000 rpm	9.0 A	1.2 Kw
130STA-M0751530H□DD	7.5 Nm	1500 rpm	3000 rpm	4.8 A	1.2 Kw
130STA-M0752040H□DD	7.5 Nm	2000 rpm	4000 rpm	6.2 A	1.6 Kw
130STA-M0841530L□DD	8.4 Nm	1500 rpm	3000 rpm	9.5 A	1.3 Kw
130STA-M0841530H□DD	8.4 Nm	1500 rpm	3000 rpm	5.8 A	1.3 Kw
130STA-M0842040H□DD	8.4 Nm	2000 rpm	4000 rpm	6.8 A	1.8 Kw
130STA-M0961530L□DD	9.6 Nm	1500 rpm	3000 rpm	11.0 A	1.5 Kw
130STA-M0961530H□DD	9.6 Nm	1500 rpm	3000 rpm	6.5 A	1.5 Kw
130STA-M0962040H□DD	9.6 Nm	2000 rpm	4000 rpm	8.0 A	2 Kw
130STA-M1151530L□DD	11.5 Nm	1500 rpm	3000 rpm	12.5 A	1.8 Kw
130STA-M1151530H□DD	11.5 Nm	1500 rpm	3000 rpm	8.0 A	1.8 Kw
130STA-M1152040H□DD	11.5 Nm	2000 rpm	4000 rpm	9.5 A	2.4 Kw
130STA-M1461530L□DD	14.6 Nm	1500 rpm	3000 rpm	16.0 A	2.3 Kw
130STA-M1461530H□DD	14.6 Nm	1500 rpm	3000 rpm	9.0 A	2.3 Kw
130STA-M1462040H□DD	14.6 Nm	2000 rpm	4000 rpm	10.0 A	3.1 Kw

□编码器代码
Encodercode

● 110 机座 (2000rpm/3000rpm)

FRAME

电机型号 MOTOR TYPE	110STA-M0422030L _{DD}	110STA-M0542030L _{DD}	110STA-M0642030L _{DD}	110STA-M0752030L _{DD}
额定功率 RATED POWER	0.88 Kw	1.1 Kw	1.3 Kw	1.6 Kw
额定转矩 RATED TORQUE	4.2 Nm	5.4 Nm	6.4 Nm	7.5 Nm
额定转速 RATED SPEED	2000 rpm	2000 rpm	2000 rpm	2000 rpm
最高转速 MAXIMUM SPEED	3000 rpm	3000 rpm	3000 rpm	3000 rpm
额定电流 RATED CURRENT	4.7A	6.0 A	7.0 A	9.0 A
转子惯量 ROTOR INERTIA	0.594 Kg $m^2 \times 10^{-3}$ (0.658Kg $m^2 \times 10^{-3}$)	0.687 Kg $m^2 \times 10^{-3}$ (0.751 Kg $m^2 \times 10^{-3}$)	0.821 Kg $m^2 \times 10^{-3}$ (0.885 Kg $m^2 \times 10^{-3}$)	0.955 Kg $m^2 \times 10^{-3}$ (1.019 Kg $m^2 \times 10^{-3}$)
机械时间常数 MECHANICAL CONSTANT TIME	0.83ms	1.58 ms	1.43 ms	1.63 ms
最大转矩 MAX TORQUE	12.6 Nm	16.2 Nm	19.2 Nm	22.5 Nm

电机型号 MOTOR TYPE	110STA-M0422030H _{DD}	110STA-M0542030H _{DD}	110STA-M0642030H _{DD}	110STA-M0752030H _{DD}
额定功率 RATED POWER	0.88 Kw	1.1 Kw	1.3 Kw	1.6 Kw
额定转矩 RATED TORQUE	4.2 Nm	5.4 Nm	6.4 Nm	7.5 Nm
额定转速 RATED SPEED	2000 rpm	2000 rpm	2000 rpm	2000 rpm
最高转速 MAXIMUM SPEED	3000 rpm	3000 rpm	3000 rpm	3000 rpm
额定电流 RATED CURRENT	2.8A	3.5 A	4.5 A	5.0 A
转子惯量 ROTOR INERTIA	0.594 Kg $m^2 \times 10^{-3}$ (0.658Kg $m^2 \times 10^{-3}$)	0.687 Kg $m^2 \times 10^{-3}$ (0.751 Kg $m^2 \times 10^{-3}$)	0.821 Kg $m^2 \times 10^{-3}$ (0.885 Kg $m^2 \times 10^{-3}$)	0.955 Kg $m^2 \times 10^{-3}$ (1.019 Kg $m^2 \times 10^{-3}$)
机械时间常数 MECHANICAL CONSTANT TIME	0.68ms	1.50 ms	1.66 ms	1.52 ms
最大转矩 MAX TORQUE	12.6 Nm	16.2 Nm	19.2 Nm	22.5 Nm

括号内为带失电制动器的转子惯量。

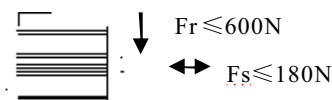
Rotor moment of inertia with power-off brake in brackets.

□ 编码器代码

Encoder code

最大径、轴向力：

Max diameter/axial force



● 110 机座 (3000rpm/4000rpm)

FRAME

电机型号 MOTOR TYPE	110STA-M0423040LDD	110STA-M0543040LDD	110STA-M0643040LDD	110STA-M0753040LDD
额定功率 RATED POWER	1.3 Kw	1.7 Kw	2.0 Kw	2.3 Kw
额定转矩 RATED TORQUE	4.2 Nm	5.4 Nm	6.4 Nm	7.5 Nm
额定转速 RATED SPEED	3000 rpm	3000 rpm	3000 rpm	3000 rpm
最高转速 MAXIMUM SPEED	4000 rpm	4000 rpm	4000 rpm	4000 rpm
额定电流 RATED CURRENT	7.1A	9.0 A	10.5 A	11.0 A
转子惯量 ROTOR INERTIA	0.594 Kg $m^2 \times 10^{-3}$ (0.658Kg $m^2 \times 10^{-3}$)	0.687 Kg $m^2 \times 10^{-3}$ (0.751 Kg $m^2 \times 10^{-3}$)	0.821 Kg $m^2 \times 10^{-3}$ (0.885 Kg $m^2 \times 10^{-3}$)	0.955 Kg $m^2 \times 10^{-3}$ (1.019 Kg $m^2 \times 10^{-3}$)
机械时间常数 MECHANICAL CONSTANT TIME	5.54ms	1.75 ms	1.71 ms	1.26 ms
最大转矩 MAX TORQUE	12.6 Nm	16.2 Nm	19.2 Nm	22.5 Nm

电机型号 MOTOR TYPE	110STA-M0423040HDD	110STA-M0543040HDD	110STA-M0643040HDD	110STA-M0753040HDD
额定功率 RATED POWER	1.3 Kw	1.7 Kw	2.0 Kw	2.3 Kw
额定转矩 RATED TORQUE	4.2 Nm	5.4 Nm	6.4 Nm	7.5 Nm
额定转速 RATED SPEED	3000 rpm	3000 rpm	3000 rpm	3000 rpm
最高转速 MAXIMUM SPEED	4000 rpm	4000 rpm	4000 rpm	4000 rpm
额定电流 RATED CURRENT	4.1A	5.0 A	6.0 A	6.5 A
转子惯量 ROTOR INERTIA	0.594 Kg $m^2 \times 10^{-3}$ (0.658Kg $m^2 \times 10^{-3}$)	0.687 Kg $m^2 \times 10^{-3}$ (0.751 Kg $m^2 \times 10^{-3}$)	0.821 Kg $m^2 \times 10^{-3}$ (0.885 Kg $m^2 \times 10^{-3}$)	0.955 Kg $m^2 \times 10^{-3}$ (1.019 Kg $m^2 \times 10^{-3}$)
机械时间常数 MECHANICAL CONSTANT TIME	3.37ms	1.72 ms	1.57 ms	1.30 ms
最大转矩 MAX TORQUE	12.6 Nm	16.2 Nm	19.2 Nm	22.5 Nm

括号内为带失电制动器的转子惯量。

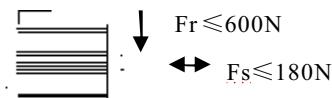
Rotor moment of inertia with power-off brake in brackets.

□ 编码器代码

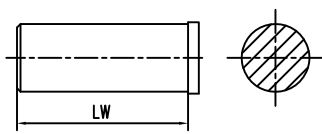
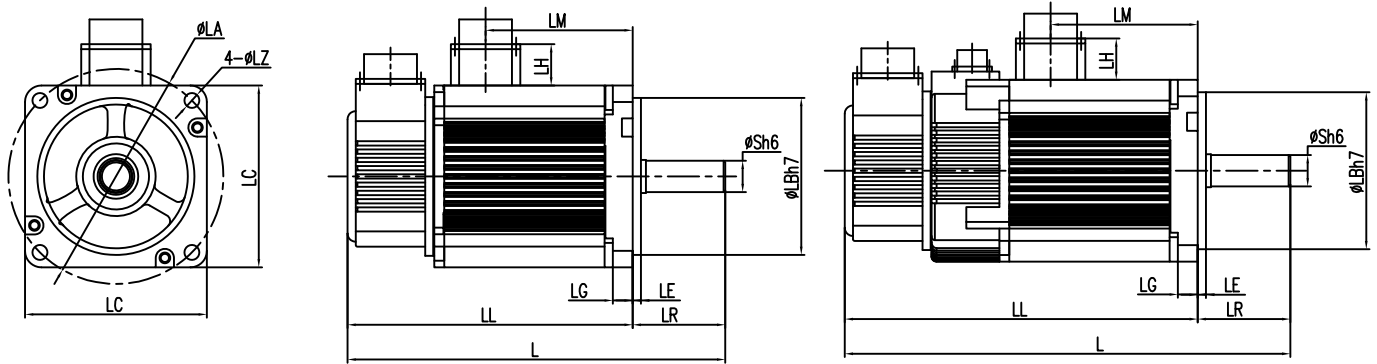
Encoder code

最大径、轴向力：

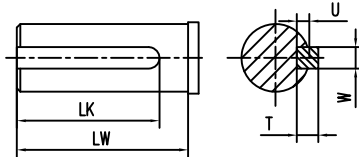
Max diameter/axial force



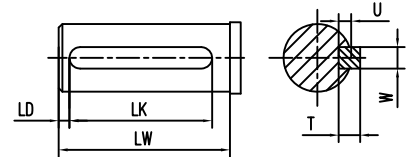
● 安装尺寸



A 型键
KEYS TYPE A



B 型键
KEYS TYPE B



C 型键
KEYS TYPE C

型号	L	LL	LR	LE	LG	LC	LA	LZ	S	LB	LM	T	U	W	LK	LW	LD	LH
110STA-M0422030L□DD 110STA-M0423040L□DD 110STA-M0422030H□DD 110STA-M0423040H□DD	222 (263)	166 (207)	56	5	12	110	130	9	19 ⁰ _{-0.013}	95 ⁰ _{-0.035}	82	6	3.5	6	40	48	3	30
110STA-M0542030L□DD 110STA-M0543040L□DD 110STA-M0542030H□DD 110STA-M0543040H□DD	229 (270)	173 (214)	56	5	12	110	130	9	19 ⁰ _{-0.013}	95 ⁰ _{-0.035}	89	6	3.5	6	40	48	3	30
110STA-M0642030L□DD 110STA-M0643040L□DD 110STA-M0642030H□DD 110STA-M0643040H□DD	239 (280)	183 (224)	56	5	12	110	130	9	19 ⁰ _{-0.013}	95 ⁰ _{-0.035}	99	6	3.5	6	40	48	3	30
110STA-M0752030L□DD 110STA-M0753040L□DD 110STA-M0752030H□DD 110STA-M0753040H□DD	249 (290)	193 (234)	56	5	12	110	130	9	19 ⁰ _{-0.013}	95 ⁰ _{-0.035}	109	6	3.5	6	40	48	3	30

注：括号内的数值为带失电制动器的电机长度。
Attention: Rotor moment of inertia with power-off brake in brackets.

● 130 机座 (1500rpm/3000rpm)

FRAME

电机型号 MOTOR TYPE	130STA-M0541530L□DD	130STA-M0541530H□DD	130STA-M0641530L□DD	130STA-M0641530H□DD
额定功率 RATED POWER	0.85 Kw	0.85 Kw	1.0 Kw	1.0 Kw
额定转矩 RATED TORQUE	5.4 Nm	5.4 Nm	6.4 Nm	6.4 Nm
额定转速 RATED SPEED	1500 rpm	1500 rpm	1500 rpm	1500 rpm
最高转速 MAXIMUM SPEED	3000 rpm	3000 rpm	3000 rpm	3000 rpm
额定电流 RATED CURRENT	6.5 A	3.6 A	8.0 A	4.2 A
转子惯量 ROTOR INERTIA	1.197 Kg $m^2 \times 10^{-3}$ (1.374 Kg $m^2 \times 10^{-3}$)	1.197 Kg $m^2 \times 10^{-3}$ (1.374 Kg $m^2 \times 10^{-3}$)	1.399 Kg $m^2 \times 10^{-3}$ (1.576 Kg $m^2 \times 10^{-3}$)	1.399 Kg $m^2 \times 10^{-3}$ (1.576 Kg $m^2 \times 10^{-3}$)
机械时间常数 MECHANICAL CONSTANT TIME	3.30 ms	2.55 ms	3.04 ms	2.46 ms
最大转矩 MAX TORQUE	16.2 Nm	16.2 Nm	19.2 Nm	19.2 Nm

电机型号 MOTOR TYPE	130STA-M0751530L□DD	130STA-M0751530H□DD	130STA-M0841530L□DD	130STA-M0841530H□DD
额定功率 RATED POWER	1.2 Kw	1.2 Kw	1.3 Kw	1.3 Kw
额定转矩 RATED TORQUE	7.5 Nm	7.5 Nm	8.4 Nm	8.4 Nm
额定转速 RATED SPEED	1500 rpm	1500 rpm	1500 rpm	1500 rpm
最高转速 MAXIMUM SPEED	3000 rpm	3000 rpm	3000 rpm	3000 rpm
额定电流 RATED CURRENT	9.0 A	4.8 A	9.5 A	5.8 A
转子惯量 ROTOR INERTIA	1.616 Kg $m^2 \times 10^{-3}$ (1.792 Kg $m^2 \times 10^{-3}$)	1.616 Kg $m^2 \times 10^{-3}$ (1.792 Kg $m^2 \times 10^{-3}$)	1.869 Kg $m^2 \times 10^{-3}$ (2.055 Kg $m^2 \times 10^{-3}$)	1.869 Kg $m^2 \times 10^{-3}$ (2.055 Kg $m^2 \times 10^{-3}$)
机械时间常数 MECHANICAL CONSTANT TIME	2.26 ms	2.00 ms	2.04 ms	2.30 ms
最大转矩 MAX TORQUE	22.5 Nm	22.5 Nm	25.2 Nm	25.2 Nm

括号内为带失电制动器的转子惯量。

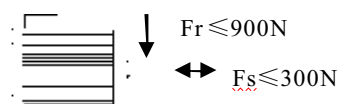
Rotor moment of inertia with power-off brake in brackets.

□ 编码器代码

Encoder code

最大径、轴向力:

Max diameter/axial force



● 130 机座 (1500rpm/3000rpm)

FRAME

电机型号 MOTOR TYPE	130STA-M0961530L□DD	130STA-M0961530H□DD	130STA-M1151530L□DD
额定功率 RATED POWER	1.5 Kw	1.5 Kw	1.8 Kw
额定转矩 RATED TORQUE	9.6 Nm	9.6 Nm	11.5 Nm
额定转速 RATED SPEED	1500 rpm	1500 rpm	1500 rpm
最高转速 MAXIMUM SPEED	3000 rpm	3000 rpm	3000 rpm
额定电流 RATED CURRENT	11.0 A	6.5 A	12.5 A
转子惯量 ROTOR INERTIA	2.071 Kg ^m ²×10 ⁻³ (2.247 Kg ^m ²×10 ⁻³)	2.071 Kg ^m ²×10 ⁻³ (2.247 Kg ^m ²×10 ⁻³)	2.381 Kg ^m ²×10 ⁻³ (2.557 Kg ^m ²×10 ⁻³)
机械时间常数 MECHANICAL CONSTANT TIME	1.92 ms	1.92 ms	2.16 ms
最大转矩 MAX TORQUE	28.8 Nm	28.8 Nm	34.5 Nm

电机型号 MOTOR TYPE	130STA-M1151530H□DD	130STA-M1461530L□DD	130STA-M1461530H□DD
额定功率 RATED POWER	1.8 Kw	2.3 Kw	2.3 Kw
额定转矩 RATED TORQUE	11.5 Nm	14.6 Nm	14.6 Nm
额定转速 RATED SPEED	1500 rpm	1500 rpm	1500 rpm
最高转速 MAXIMUM SPEED	3000 rpm	3000 rpm	3000 rpm
额定电流 RATED CURRENT	8.0 A	16.0 A	9.0 A
转子惯量 ROTOR INERTIA	2.381 Kg ^m ²×10 ⁻³ (2.557 Kg ^m ²×10 ⁻³)	3.015 Kg ^m ²×10 ⁻³ (3.182 Kg ^m ²×10 ⁻³)	3.015 Kg ^m ²×10 ⁻³ (3.182 Kg ^m ²×10 ⁻³)
机械时间常数 MECHANICAL CONSTANT TIME	2.24 ms	1.76 ms	1.72 ms
最大转矩 MAX TORQUE	34.5 Nm	43.8 Nm	43.8 Nm

括号内为带失电制动器的转子惯量。

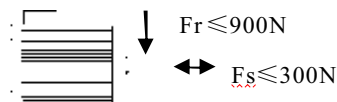
Rotor moment of inertia with power-off brake in brackets.

□编码器代码

Encoder code

最大径、轴向力:

Max diameter/axial force



● 130 机座 (2000rpm/4000rpm)

FRAME

电机型号 MOTOR TYPE	130STA-M0542040H□DD	130STA-M0642040H□DD	130STA-M0752040H□DD	130STA-M0842040H□DD
额定功率 RATED POWER	1.1 Kw	1.3 Kw	1.6 Kw	1.8 Kw
额定转矩 RATED TORQUE	5.4 Nm	6.4 Nm	7.5 Nm	8.4 Nm
额定转速 RATED SPEED	2000 rpm	2000 rpm	2000 rpm	2000 rpm
最高转速 MAXIMUM SPEED	4000 rpm	4000 rpm	4000 rpm	4000 rpm
额定电流 RATED CURRENT	5.0 A	5.5 A	6.2 A	6.8 A
转子惯量 ROTOR INERTIA	1.197 Kg $m^2 \times 10^{-3}$ (1.374 Kg $m^2 \times 10^{-3}$)	1.399 Kg $m^2 \times 10^{-3}$ (1.576 Kg $m^2 \times 10^{-3}$)	1.616 Kg $m^2 \times 10^{-3}$ (1.792 Kg $m^2 \times 10^{-3}$)	1.869 Kg $m^2 \times 10^{-3}$ (2.055 Kg $m^2 \times 10^{-3}$)
机械时间常数 MECHANICAL CONSTANT TIME	3.14 ms	2.59 ms	1.93 ms	2.16 ms
最大转矩 MAX TORQUE	16.2 Nm	19.2 Nm	22.5 Nm	25.2 Nm

电机型号 MOTOR TYPE	130STA-M0962040H□DD	130STA-M1152040H□DD	130STA-M1462040H□DD
额定功率 RATED POWER	2.0 Kw	2.4 Kw	3.1 Kw
额定转矩 RATED TORQUE	9.6 Nm	11.5 Nm	14.6 Nm
额定转速 RATED SPEED	2000 rpm	2000 rpm	2000 rpm
最高转速 MAXIMUM SPEED	4000 rpm	4000 rpm	4000 rpm
额定电流 RATED CURRENT	8.0 A	9.5 A	10.0 A
转子惯量 ROTOR INERTIA	2.071 Kg $m^2 \times 10^{-3}$ (2.247 Kg $m^2 \times 10^{-3}$)	2.381 Kg $m^2 \times 10^{-3}$ (2.557 Kg $m^2 \times 10^{-3}$)	4.082 Kg $m^2 \times 10^{-3}$ (4.258 Kg $m^2 \times 10^{-3}$)
机械时间常数 MECHANICAL CONSTANT TIME	2.09 ms	1.99 ms	1.46 ms
最大转矩 MAX TORQUE	28.8 Nm	34.5 Nm	43.8 Nm

括号内为带失电制动器的转子惯量。

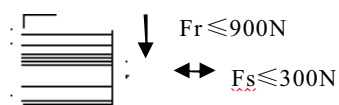
Rotor moment of inertia with power-off brake in brackets.

□ 编码器代码

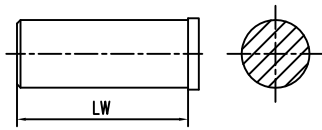
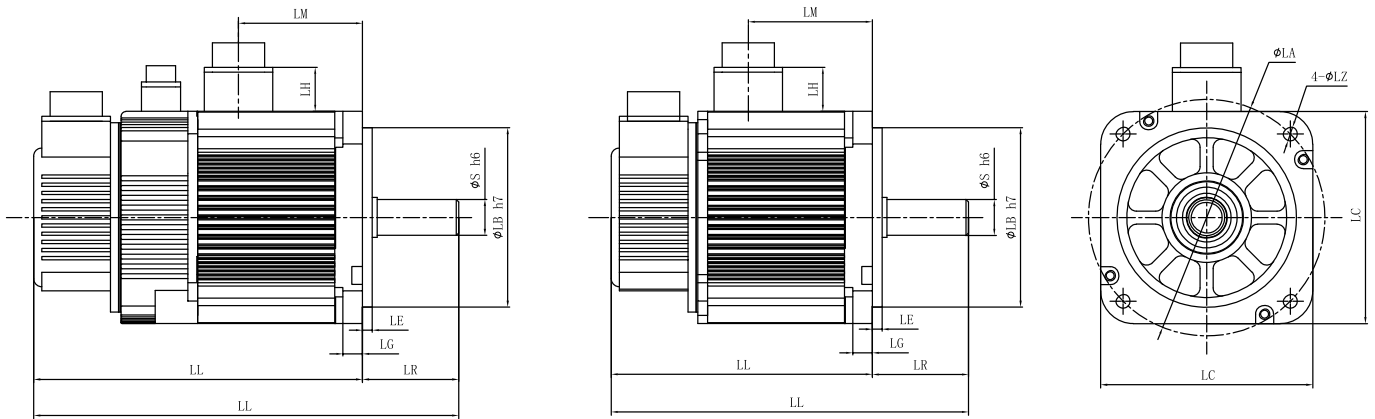
Encoder code

最大径、轴向力:

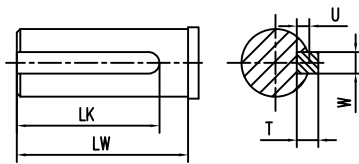
Max diameter/axial force



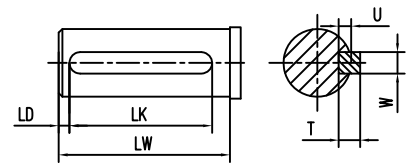
● 安装尺寸



A 型 键
KEYS TYPE A



B 型 键
KEYS TYPE B



C 型 键
KEYS TYPE C

型号	L	LL	LR	LE	LG	LC	LA	LZ	S	LB	LM	T	U	W	LK	LW	LD	LH
130STA-M0541530L□DD 130STA-M0541530H□DD 130STA-M0542040H□DD	219 (261)	160 (202)	59	6	12	130	145	8.5	$22^{0}_{-0.013}$	$110^{0}_{-0.04}$	59	6	3.5	6	40	50	5	30
130STA-M0641530L□DD 130STA-M0641530H□DD 130STA-M0642040H□DD	225 (267)	166 (208)	59	6	12	130	145	8.5	$22^{0}_{-0.013}$	$110^{0}_{-0.04}$	65	6	3.5	6	40	50	5	30
130STA-M0751530L□DD 130STA-M0751530H□DD 130STA-M0752040H□DD	232 (274)	173 (215)	59	6	12	130	145	8.5	$22^{0}_{-0.013}$	$110^{0}_{-0.04}$	72	6	3.5	6	40	50	5	30
130STA-M0841530L□DD 130STA-M0841530H□DD 130STA-M0842040H□DD	239 (281)	180 (222)	59	6	12	130	145	8.5	$22^{0}_{-0.013}$	$110^{0}_{-0.04}$	79	6	3.5	6	40	50	5	30
130STA-M0961530L□DD 130STA-M0961530H□DD 130STA-M0962040H□DD	245 (287)	186 (228)	59	6	12	130	145	8.5	$22^{0}_{-0.013}$	$110^{0}_{-0.04}$	85	6	3.5	6	40	50	5	30
130STA-M1151530L□DD 130STA-M1151530H□DD 130STA-M1152040H□DD	253 (295)	194 (236)	59	6	12	130	145	8.5	$22^{0}_{-0.013}$	$110^{0}_{-0.04}$	93	6	3.5	6	40	50	5	30
130STA-M1461530L□DD 130STA-M1461530H□DD	272 (314)	213 (255)	59	6	12	130	145	8.5	$22^{0}_{-0.013}$	$110^{0}_{-0.04}$	112	6	3.5	6	40	50	5	30
130STA-M1462040H□DD	304 (346)	245 (287)	59	6	12	130	145	8.5	$22^{0}_{-0.013}$	$110^{0}_{-0.04}$	144	6	3.5	6	40	50	5	30

注：括号内的数值为带失电制动器的电机长度。

Attention: Rotor moment of inertia with power-off brake in brackets.

● 180机座 (1500rpm/3000rpm)

FRAME

电机型号 MOTOR TYPE	180STA-M1861530H□DD	180STA-M2301530H□DD	180STA-M2801530H□DD
额定功率 RATED POWER	2.9 Kw	3.6 Kw	4.4 Kw
额定转矩 RATED TORQUE	18.6 Nm	23.0 Nm	28.0 Nm
额定转速 RATED SPEED	1500 rpm	1500 rpm	1500 rpm
最高转速 MAXIMUM SPEED	3000 rpm	3000 rpm	3000 rpm
额定电流 RATED CURRENT	11 A	13.3 A	16.5 A
转子惯量 ROTOR INERTIA	5.09 Kg $m^2 \times 10^{-3}$ (5.75 Kg $m^2 \times 10^{-3}$)	6.32 Kg $m^2 \times 10^{-3}$ (6.97 Kg $m^2 \times 10^{-3}$)	6.90 Kg $m^2 \times 10^{-3}$ (7.55 Kg $m^2 \times 10^{-3}$)
机械时间常数 MECHANICAL CONSTANT TIME	1.79ms	1.58 ms	1.15 ms
最大转矩 MAX TORQUE	55.8 Nm	69.0 Nm	84.0 Nm

电机型号 MOTOR TYPE	180STA-M3501530H□DD	180STA-M4801530H□DD	180STA-M5501530H□DD
额定功率 RATED POWER	5.5 Kw	7.5 Kw	8.6 Kw
额定转矩 RATED TORQUE	35.0 Nm	48.0 Nm	55.0 Nm
额定转速 RATED SPEED	1500 rpm	1500 rpm	1500 rpm
最高转速 MAXIMUM SPEED	3000 rpm	3000 rpm	3000 rpm
额定电流 RATED CURRENT	20.5 A	27.0 A	31.0 A
转子惯量 ROTOR INERTIA	9.63 Kg $m^2 \times 10^{-3}$ (10.28 Kg $m^2 \times 10^{-3}$)	12.68 Kg $m^2 \times 10^{-3}$ (13.33 Kg $m^2 \times 10^{-3}$)	14.51 Kg $m^2 \times 10^{-3}$ (15.16 Kg $m^2 \times 10^{-3}$)
机械时间常数 MECHANICAL CONSTANT TIME	1.25 ms	1.10 ms	1.17 ms
最大转矩 MAX TORQUE	105.0 Nm	144.0 Nm	165.0 Nm

括号内为带失电制动器的转子惯量。

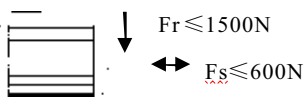
Rotor moment of inertia with power-off brake in brackets.

□ 编码器代码

Encoder code

最大径、轴向力：

Max diameter/axial force



● 180机座 (2000rpm/4000rpm)

FRAME

电机型号 MOTOR TYPE	180STA-M1862040H□DD	180STA-M2302040H□DD
额定功率 RATED POWER	3.7 Kw	4.8 Kw
额定转矩 RATED TORQUE	18.6 Nm	23.0 Nm
额定转速 RATED SPEED	2000 rpm	2000 rpm
最高转速 MAXIMUM SPEED	4000 rpm	4000 rpm
额定电流 RATED CURRENT	14.2 A	18.5 A
转子惯量 ROTOR INERTIA	5.09 Kg $m^2 \times 10^{-3}$ (5.75 Kg $m^2 \times 10^{-3}$)	6.32 Kg $m^2 \times 10^{-3}$ (6.97 Kg $m^2 \times 10^{-3}$)
机械时间常数 MECHANICAL CONSTANT TIME	1.81 ms	1.36 ms
最大转矩 MAX TORQUE	55.8 Nm	69.0 Nm

电机型号 MOTOR TYPE	180STA-M2802040H□DD	180STA-M3502040H□DD
额定功率 RATED POWER	5.9 Kw	7.3 Kw
额定转矩 RATED TORQUE	28.0 Nm	35.0 Nm
额定转速 RATED SPEED	2000 rpm	2000 rpm
最高转速 MAXIMUM SPEED	4000 rpm	4000 rpm
额定电流 RATED CURRENT	22 A	27 A
转子惯量 ROTOR INERTIA	6.90 Kg $m^2 \times 10^{-3}$ (7.55 Kg $m^2 \times 10^{-3}$)	9.63 Kg $m^2 \times 10^{-3}$ (10.28 Kg $m^2 \times 10^{-3}$)
机械时间常数 MECHANICAL CONSTANT TIME	1.28 ms	1.25 ms
最大转矩 MAX TORQUE	84.0 Nm	105.0 Nm

括号内为带失电制动器的转子惯量。

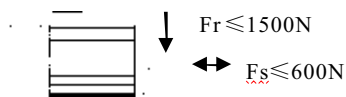
Rotor moment of inertia with power-off brake in brackets.

□编码器代码

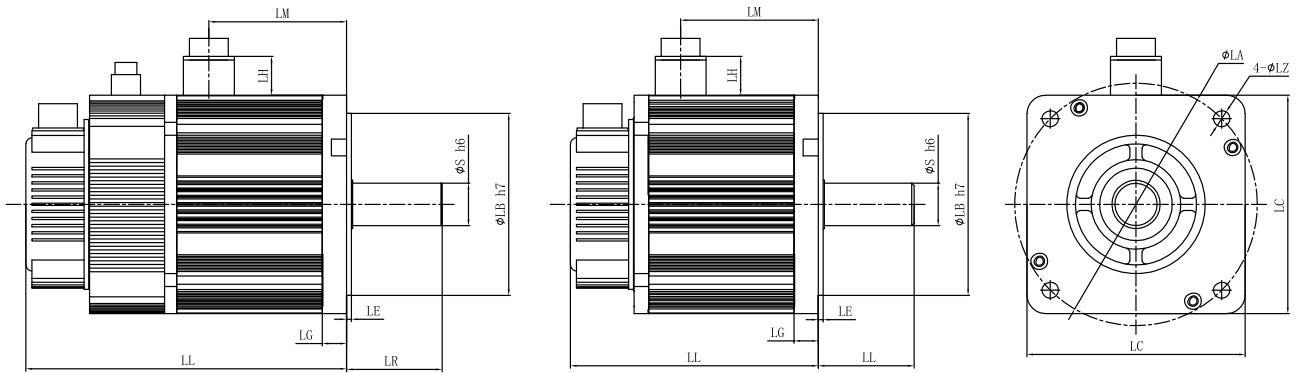
Encoder code

最大径、轴向力：

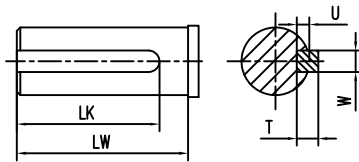
Max diameter/axial force



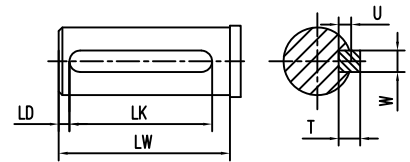
● 安装尺寸



A 型 键
KEYS TYPE A



B 型 键
KEYS TYPE B



C 型 键
KEYS TYPE C

型号	L	LL	LR	LE	LG	LC	LA	LZ	S	LB	LM	T	U	W	LK	LW	LD	LH
180STA-M1861530H□DD 180STA-M1862040H□DD	281 (341)	202 (262)	79	4	20	180	200	13.5	$35^{0}_{-0.013}$	$114.3^{0}_{-0.04}$	91	8	5	10	60	74	5	40
180STA-M2301530H□DD 180STA-M2302040H□DD	295 (355)	216 (276)	79	4	20	180	200	13.5	$35^{0}_{-0.013}$	$114.3^{0}_{-0.04}$	105	8	5	10	60	74	5	40
180STA-M2801530H□DD 180STA-M2802040H□DD	314 (374)	235 (295)	79	4	20	180	200	13.5	$35^{0}_{-0.013}$	$114.3^{0}_{-0.04}$	124	8	5	10	60	74	5	40
180STA-M3501530H□DD 180STA-M3502040H□DD	335 (395)	256 (316)	79	4	20	180	200	13.5	$35^{0}_{-0.013}$	$114.3^{0}_{-0.04}$	145	8	5	10	60	74	5	40
180STA-M4801530H□DD	370 (430)	291 (351)	79	4	20	180	200	13.5	$35^{0}_{-0.013}$	$114.3^{0}_{-0.04}$	180	8	5	10	60	74	5	40
180STA-M5501530H□DD	390 (450)	311 (371)	79	4	20	180	200	13.5	$35^{0}_{-0.013}$	$114.3^{0}_{-0.04}$	200	8	5	10	60	74	5	40

注：括号内的数值为带失电制动器的电机长度。
Attention: Rotor moment of inertia with power-off brake in brackets.

LB尺寸可选配 $150^{0}_{-0.04}$ 大止口

| 与 | 您 | 共 | 进 |

武汉华大新型电机科技股份有限公司

Wuhan Huada New Type Motor Technology Co.,Ltd

地址 : 武汉市江夏区藏龙岛科技园谭湖二路 6 号

电话 :13925507910

传真 :027-87547775

邮编 :430221

网址 : www.hxdwh.com.cn